

# 2011

## Heincke Excursion 2011 - HE-349

[#poster](#) of the 2011 Excursion.

- [Heincke Excursion 2011 - HE-349](#)
  - [General Information](#)
  - [Introductory Mandatory Lecture](#)
  - [2011 Schedule](#)
  - [Participants \(confirmed\)](#)
  - [Photos](#)
  - [Cruise Poster](#)
  - [Useful material](#)
    - [General use](#)
    - [Parametric Echosounder](#)

### General Information

Further information available on the [Documentation](#) page.

### Introductory Mandatory Lecture

This lecture took place on 16th Feb. 2011, from 13:00 to 14:00 in the Oceanlab. If you need a copy of the lecture slides, [CLICK HERE](#)

### 2011 Schedule

- Leg 1: 06:00, 28th Feb. 2011 to 12:00, 2nd March 2011
  - Departure from Jacobs University Main Gate: 06:00, 28th Feb. 2011
  - Arrival at Heincke 07:00, 28th Feb. 2011
  - Departure from Bremenhaven docks: 08:00, 28th Feb. 2011
  - Excursion Ends: 12:00, 2nd March, 2011
  - Departure from Helgoland (Ferry to Cuxhaven): 08:00, 3rd March, 2011



Leg 1 participants: Dinner on 2nd March and breakfast on 3rd March will **not** be provided

- Leg 2: 14:00, 2nd March 2011 to 17:00, 4th March 2011

### Participants (confirmed)

Leg 1:

No.	Name	First Name	Affiliation /role
1	Bijma	Jelle	Instructor
2	Unnithan	Vikram	Instructor
3	Rohard	Gerd	Instructor
4	Ciesewski	Boris	Instructor
5	rokitta	Sebastian	Instructor
6	Benthien	Albert	Instructor
7	Rossi	Angelo	Instructor
8	Neu	Florian	Instructor
9	Asmit	Joshi	Jacobs University
10	Ballent	Anika	Jacobs University
11	Bista	Diksha	Jacobs University
12	Abhimanyu	Chhetri	Jacobs University
13	David	Stefan-Sebastian	Jacobs University
14	Domdey	Marvin	Jacobs University
15	Karakina	Regina	Jacobs University
16	Kokotanekova	Rosita	Jacobs University
17	Moore	Rachael	Jacobs University

18	Mubeda	Tapiwa	Jacobs University
19	Sturm	Florian	Jacobs University
20	von Dzerzawa	Jörg	Jacobs University
21	Galgani	Luisa	AWI
22	Endres	Sonja	AWI
23	Wurst	Mascha	AWI
24	Bijma	Nienke	AWI (praktikantin)
25	Velinov	Darko	Jacobs University

**!! The following course auditors will \*NOT\* participate in this excursion !!**

Babiac	Diana	Auditor
Damian	Andrei-Alexandru	Auditor
Smarandache	Anita Klarisa Andreea	Auditor

**Leg 2:**

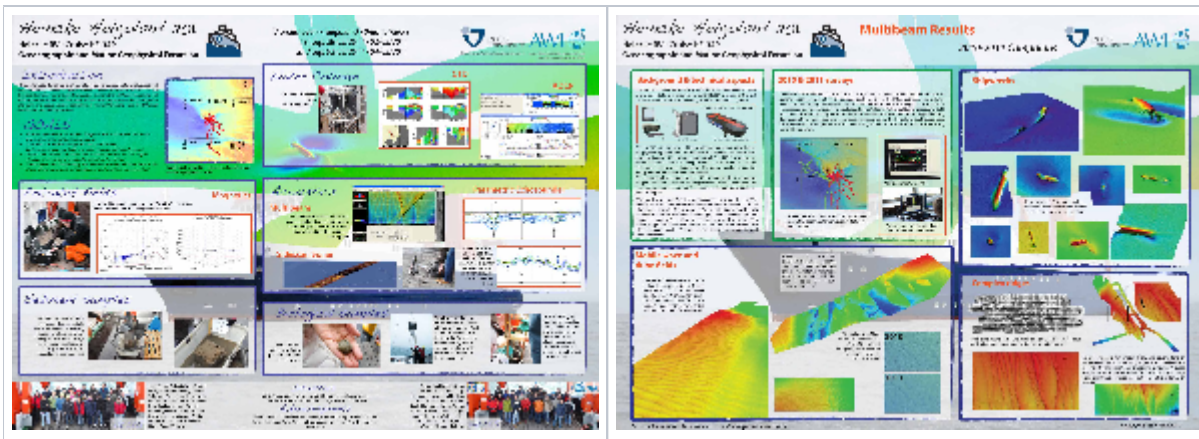
No.	Name	First Name	Affiliation /role
1	Bijma	Jelle	Instructor
2	Unnithan	Vikram	Instructor
3	Rohard	Gerd	Instructor
4	Ciesewski	Boris	Instructor
5	rokitta	Sebastian	Instructor
6	Benthien	Albert	Instructor
7	Rossi	Angelo	Instructor
8	Neu	Florian	Instructor
9	Hu	Yubin	AWI
10	Xiaotong	Xiao	AWI
11	Staerz	Michael	AWI
12	Zhang	Xu	AWI
13	Krause	Evamaria	AWI
14	Eberlein	Tim	AWI
15	Zittier	Zora	AWI
16	Wekerle	Claudia	AWI
17	Huppertz	Nicole	Uni Bremen
18	Wang	Xuezhu	AWI
19	Hollands	Thomas	AWI
20	Korger	Edith	AWI
21	Hegewald	Anne	AWI
22	Tarantelli	Soledad	AWI
23	Mieth	Matthias	AWI
24	Sweet	Elizabeth	AWI
25	Kalberg	Thomas	AWI

## Photos

Add some nice representative photos from the first and second legs here

## Cruise Poster

Poster with the main highlights of the cruise excursion:	Poster focused on multibeam results:
--	--------------------------------------



Useful material

### General use

A shapefile of the 2011 excursion [here](#)

### Parametric Echosounder

Some sample pictures available [here](#)