

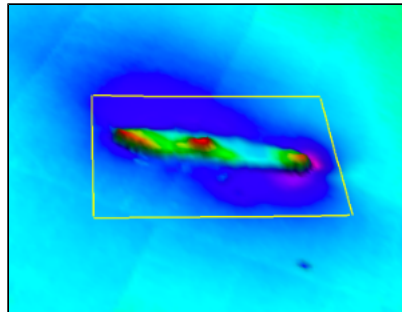
# Home

## Goals and Objectives:

- Provide an introduction to fundamental marine biogeosciences and geophysical research techniques
- Hands-on experience at sea-going research
- Introduce concepts of marine navigation, positioning, mapping, GIS and data management
- Understand the impact of tides and ocean currents on sea bed morphology in the German North Sea
- Investigate sedimentary characteristics from sediment samples
- Look at the composition and faunal characteristics of planktonic and benthic communities
- Study changes in physical properties such as temperature and salinity of the water column



Helgoland chart



Ship wreck imaged 2010



Presumed Glacial Features